

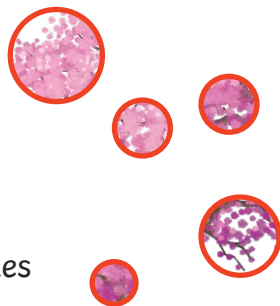
How to Paint the Sakura

10 So appealing is the Sakura tree, also known as the
18 Japanese cherry blossom, that there is a traditional
27 viewing period in Japan, known as 'hanami', for the
34 fleeting floral demonstration of blossoms each spring.

43 Its iconic appearance has long been the inspiration of
51 artists, particularly those of Japanese heritage. Here, find
60 out some key techniques for painting this majestic marvel.

63 You will need:

- 67 • pink or white paint
- 69 • brown paint
- 72 • paper or canvas
- 76 • thin and thick paintbrushes



77 Instructions

- 87 1. Lightly, press and lift a thick, loaded paintbrush on to
97 the paper or canvas towards a central point, forming a
104 circle with six oval-shaped beads of paint.
- 110 2. Repeat this to form several blossoms.
- 119 3. Join each blossom using a thin paintbrush loaded with
128 brown paint to create branches and a thin trunk.

Quick Questions

1. What is the traditional cherry blossom viewing period called?

2. Find and copy one word which means 'well-known for being admired or symbolic'.

3. Explain what the word 'lightly' in step 1 of the instructions suggests to the reader.

4. Why might an artist of Japanese heritage choose to paint the Sakura?

HarperCollinsPublishers

michael
morpurgo
month
Bookclub



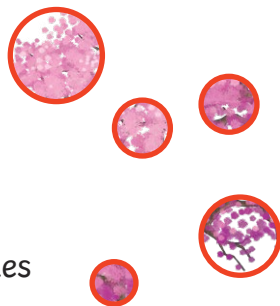
How to Paint the Sakura

10 So appealing is the Sakura tree, also known as the
18 Japanese cherry blossom, that there is a traditional
27 viewing period in Japan, known as 'hanami', for the
34 fleeting floral demonstration of blossoms each spring.

43 Its iconic appearance has long been the inspiration of
51 artists, particularly those of Japanese heritage. Here, find
60 out some key techniques for painting this majestic marvel.

You will need:

- 67 • pink or white paint
- 69 • brown paint
- 72 • paper or canvas
- 76 • thin and thick paintbrushes



Instructions

- 87 1. Lightly, press and lift a thick, loaded paintbrush on to
97 the paper or canvas towards a central point, forming a
104 circle with six oval-shaped beads of paint.
- 110 2. Repeat this to form several blossoms.
- 119 3. Join each blossom using a thin paintbrush loaded with
128 brown paint to create branches and a thin trunk.

Answers

1. What is the traditional cherry blossom viewing period called?

The traditional cherry blossom viewing period is called 'hanami'.

2. Find and copy one word which means 'well-known for being admired or symbolic'.

iconic

3. Explain what the word 'lightly' in step 1 of the instructions suggests to the reader.

Pupils' own responses, such as: The word 'lightly' suggests that the paintbrush should be pressed gently so as to only put a small amount of paint on to the paper or canvas to avoid large splodges of paint.

4. Why might an artist of Japanese heritage choose to paint the Sakura?

Pupils' own responses, such as: The Sakura is an iconic Japanese tree, known for blossoming briefly in spring so artists of Japanese heritage might want to capture its majesty while they can.

