

Glossary

Talk like a scientist



Words you already know



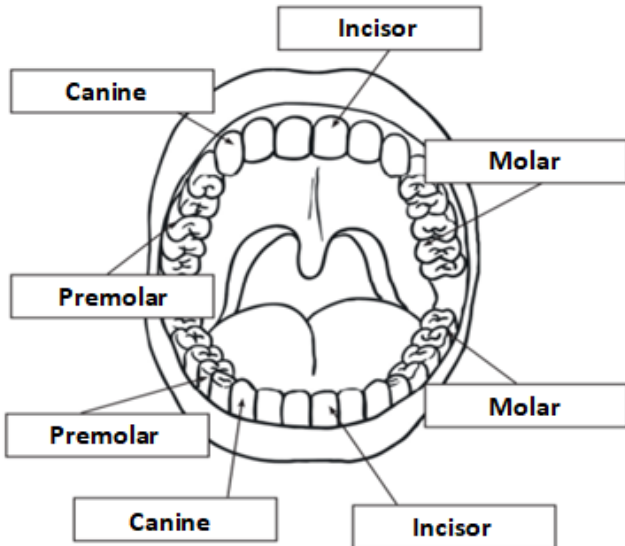
Herbivore



Carnivore

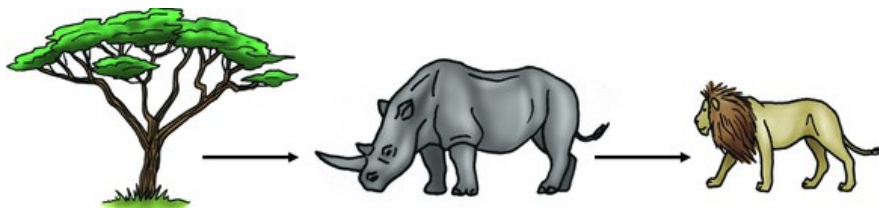
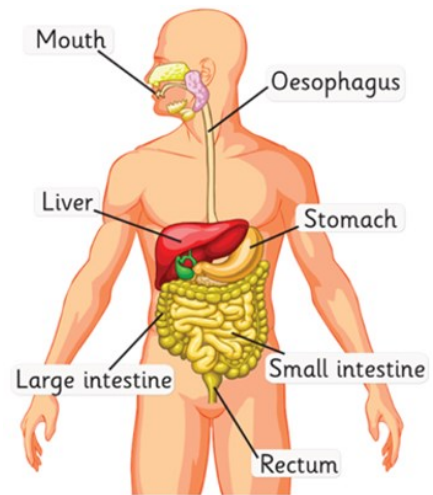


Omnivore



Incisor	Front teeth used to cut and chew food
Canine	Pointed teeth used for biting and tearing food
Premolar	Smaller molars used for grinding food
Molar	Larger molars used to grind food when chewing

Saliva	Fluid produced in the mouth which aids digestion
Oesophagus	Muscular tube which connects the mouth to the stomach
Small intestine	Organ that absorbs the nutrition from food
Large intestine	Organ that absorbs water and then forms faeces for extraction
Faeces	Bodily waste, which is commonly known as 'poo'
Rectum	Where faeces is stored
Anus	Where faeces comes out of the body



Producer	Prey	Predator
Start of a food chain always eaten by a consumer	An animal that is killed by another for food	An animal that kills and eats other animals

Year 4 – Science

Animals including humans Science Glossary – Home Copy

We are sending home your science glossary so you can share your learning with your family at home.

Take a look at your glossary and see how many words and their definitions you can remember.

Have a look at the BBC Bitesize website to watch videos and quizzes all about animals including humans



Science: Animals including humans

Homework Challenge:

Research and create a poster about your favourite animal.

Your poster needs to include:

- Where the animal lives.
- What the animal likes to eat and if it is an omnivore, carnivore or herbivore.
- The features that the animal has to help it survive.
- How your animal fits into a food chain.

You could also include some other interesting facts about your animal.