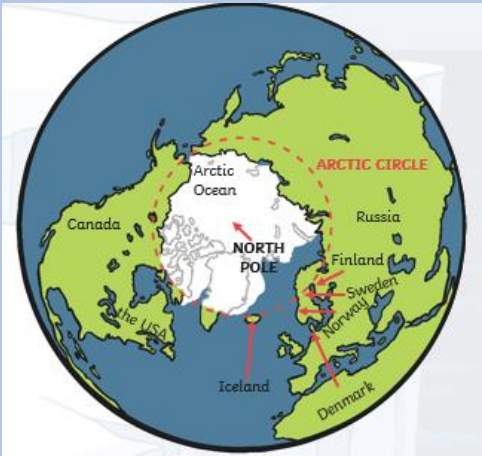


Does the world need ice?

Where?



The **Arctic** is at the top of the earth. It consists of the Arctic ocean and parts of 8 countries.



Antarctica is at the bottom of the earth. It is a continent.

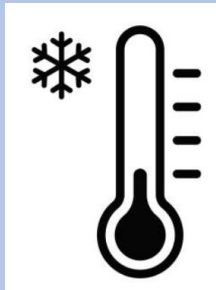
Human Geography



There are 4 million people living in the **Arctic**.

There are no people living permanently in **Antarctica**.

Physical Geography



The average temperature in the **Arctic** is 0°C in the Summer and -40°C in the winter.

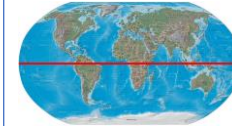
The average temperature in **Antarctica** is -28°C in the summer and -60°C in the winter.

Key Vocabulary

North Pole Is at the very top of the earth, located in the Arctic.

South Pole Is at the very bottom of the earth, located in Antarctica.

Equator

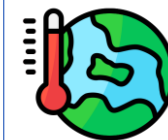


An imaginary line around the centre of the Earth.

Climate The weather conditions in an area over a long period.

Adaption Becoming better suited to an environment.

Global Warming



The gradual increase of the earth's temperature.